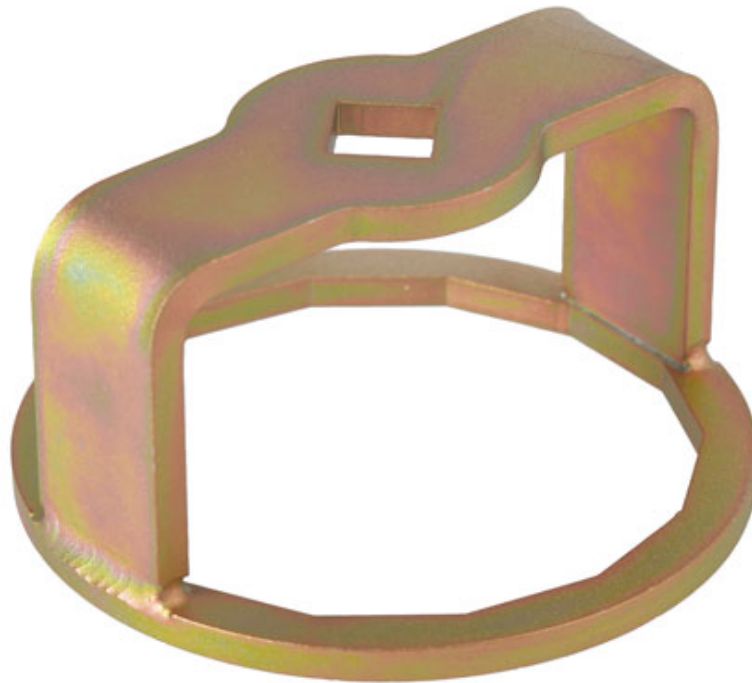


Fuel Filter Housing Wrench 1/2"D - for Mercedes-Benz

Specially designed for Laser Tools, this 1/2"D diesel filter housing wrench allows for the removal and fitting of the plastic fuel filter housing found on the 1.6L, 2.0L and 2.2L diesel engines found across the current Mercedes-Benz range, including Sprinter vans (from 2018).



Additional Information

- Applications include: Mercedes-Benz C class (from 2013), CLA (from 2019), E class (from 2016), GLA (from 2020), GLB (from 2019), GLC (from 2015), GLE (from 2018) and Sprinter (from 2018).
- Engine applications covered include: 1.6, 2.0 and 2.2L diesel engines.
- Designed to be used with 1/2" socketry (hand tools only).
- 85mm across flats, 14 flutes.
- Laser cut steel construction to ensure accuracy and to reduce damage to the plastic housing.

<http://lasertools.co.uk/product/8319>



